

MATERIALS & FINISHES

6-2026



Materials:

Varnished metal p. 7
Exclusive metal p. 7
Fenix-NTM p. 5
Wood p. 2
Laminam p. 9
Marble p. 9
Matt and glossy lacquered p. 4
Melamine-faced p. 3
Metallic lacquered p. 5
Metal p. 6
Glass and mirror p. 8

Fabrics:

Alveo p. 10
Biacco p. 11
Borgo p. 12
Canvas 2 (Kvadrat) p. 14-15
Divina Melange 3 (Kvadrat) p. 16-17
Field 2 (Kvadrat) p. 18
Greto p. 19
Hallingdal 65 (Kvadrat) p. 20-21
Hero 2 (Kvadrat) p. 22
Merit (Sahco) p. 24-25
Moss (Kvadrat) p. 26
Orsetto (ONE Mario Sirtori) p. 27
Parigi p. 28
Remix 3 (Kvadrat) p. 30-31
Scuba (Maharam) p. 29
Steelcut Trio 3 (Kvadrat) p. 32-33
Stipa p. 34
Vello p. 38

Leathers:

Elmocoast / Neocoast (Elmo) p. 42
Elmosoft X (Elmo) p. 40-41

Synthetic leather:

Valencia (Spradling) p. 36-37

Fabrics for curtain:

Lino Lino (Kvadrat) p. 44
Twilight (Kvadrat) p. 45
Zulu 2 (Kvadrat) p. 46

Wood

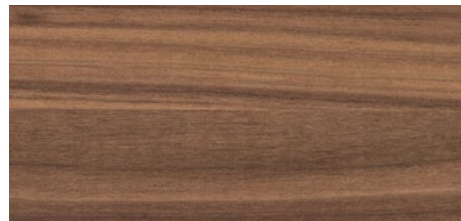
Essenza



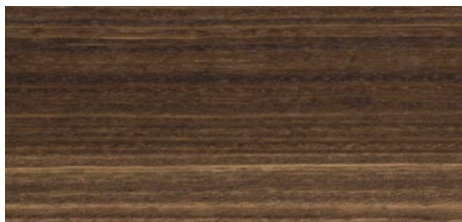
Rovere Naturale



Rovere Nero



Noce



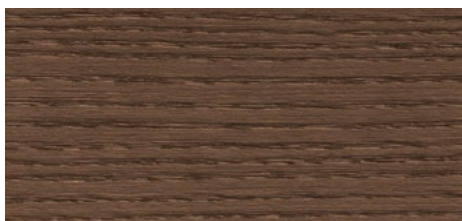
Eucalipto



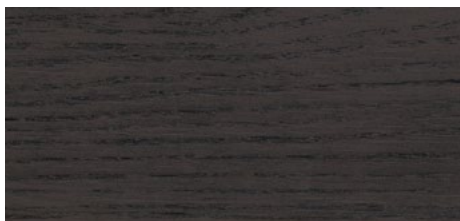
Frassino tinto Rovere Naturale



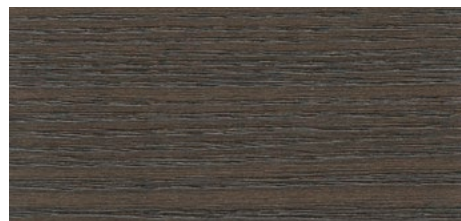
Frassino tinto Noce



Frassino tinto Eucalipto



Frassino tinto Nero



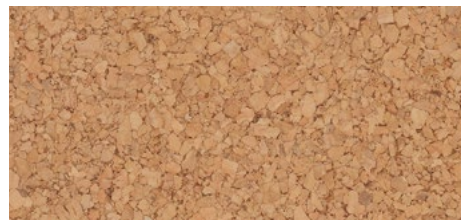
Frassino Iron



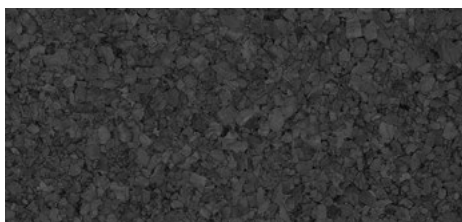
Frassino Cenere



Frassino laccato opaco (29 colours)



Sughero naturale



Sughero nero

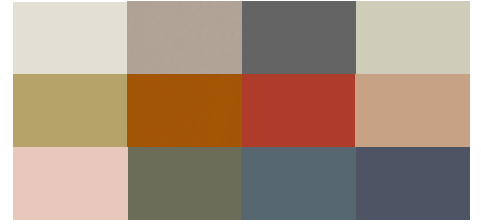
INDEX



Materico Noce



Materico Eucalipto



Materico Eucalipto laccato opaco (29 colours)



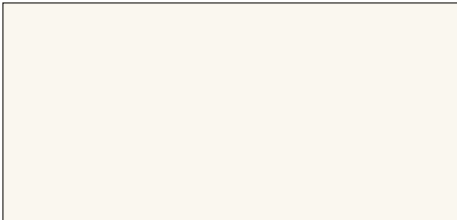
Materico Grey Wood



Materico Palladio



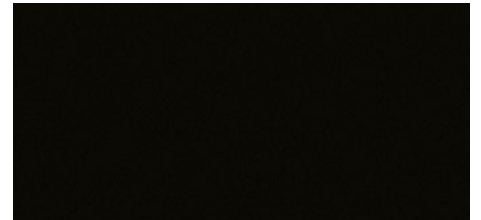
Materico Tela



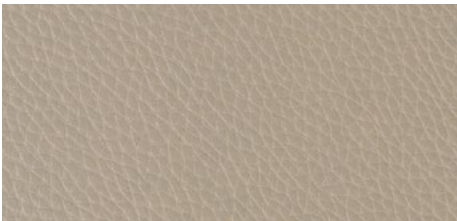
Materico Neve



Materico Spago



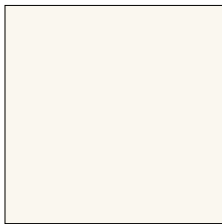
Materico Nero



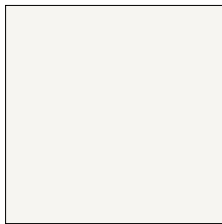
Pelle colore Fango

Matt and glossy lacquered

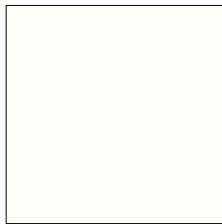
Laccati opachi e lucidi



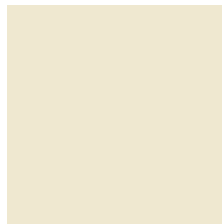
Neve



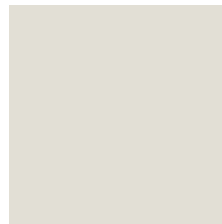
Pomice



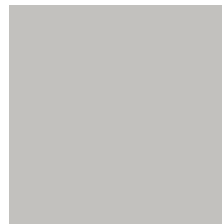
Latte



Canapa



Avena



Beige



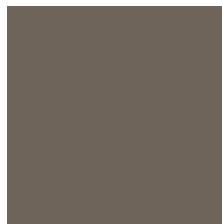
Corda



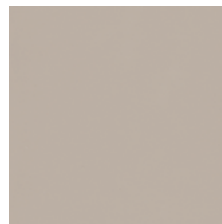
Lino



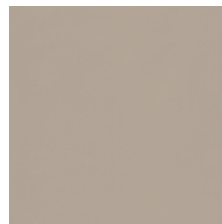
Tufo



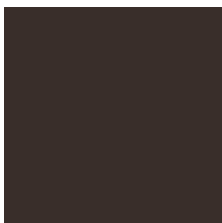
Visone



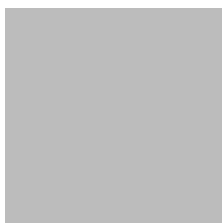
Spago



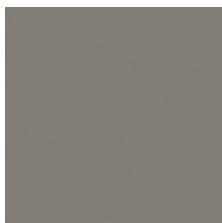
Fango



Grafite



Colombo



Basalto



Grigio



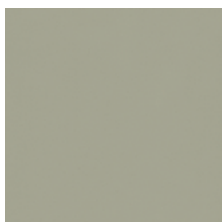
Asfalto



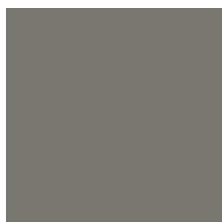
Nero



Poggia



Argilla



Ferro



Ambra



Miele



Rubino



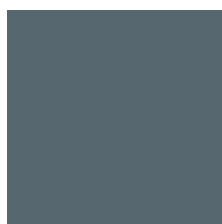
Cameo



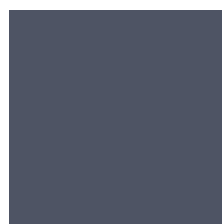
Conchiglia



Oliva



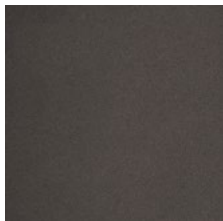
Alpi



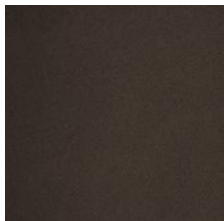
Notte

Metallic lacquered

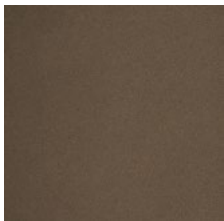
Laccati metallizzati



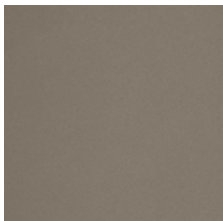
Piombo



Ombra

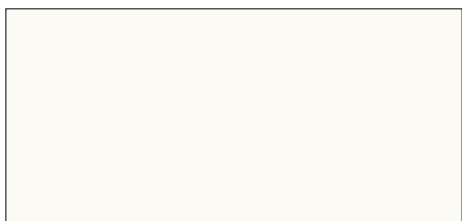


Moca



Titanio

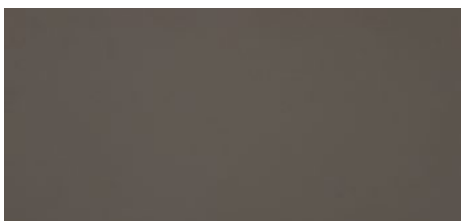
Fenix-NTM



Bianco Kos



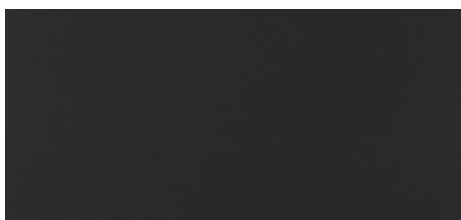
Castoro Ottawa



Grigio Londra



Beige Luxor



Nero Ingo



Grigio Bromo



Beige Arizona



Cacao Orinoco



Verde Comodoro

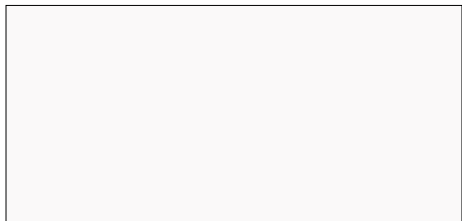


Rosso Jaipur

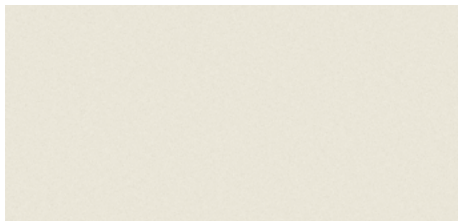


Grigio Aragona

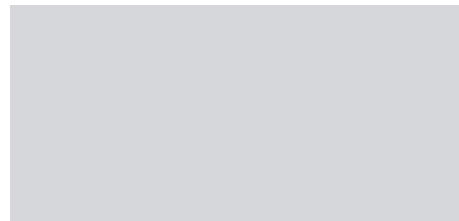
Metal
Metallo



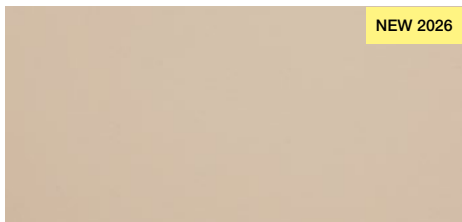
Bianco



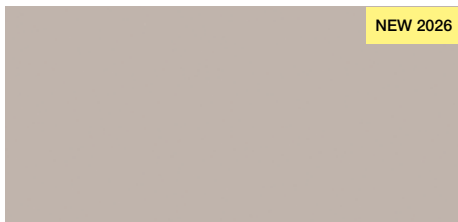
Grigio sabbia



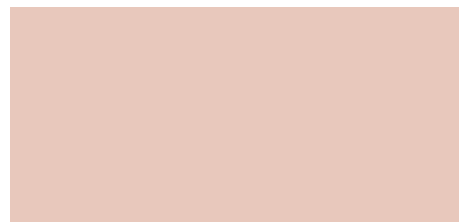
Grigio alluminio



Beige Luxor



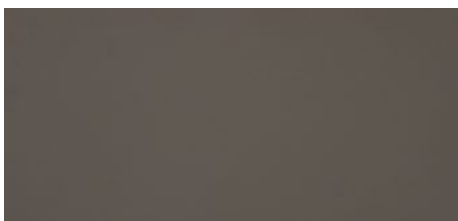
Beige Arizona



Conchiglia



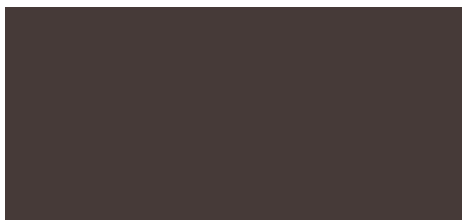
Castoro Ottawa



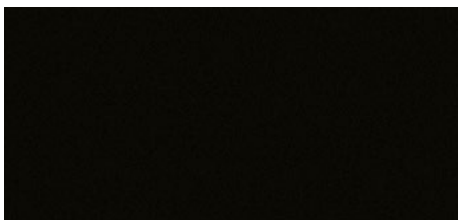
Grigio Londra



Grigio antracite



Cacao Orinoco



Nero



Grigio Aragona



Grigio Bromo



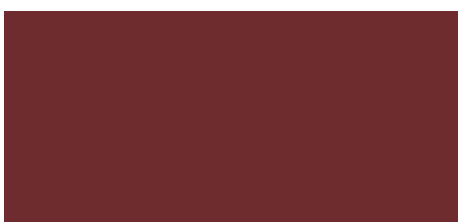
Verde Comodoro



Verde bluastro



Verde oliva



Rosso Jaipur



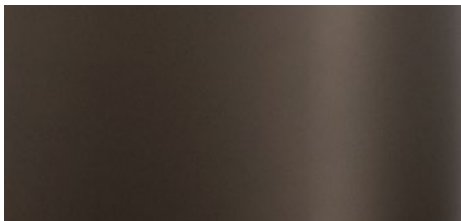
Terracotta

Exclusive metal

Metallo Esclusivo



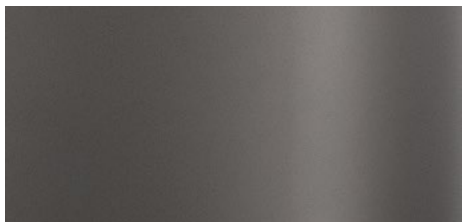
Exclusive Champagne



Exclusive Brown



Exclusive Onyx Black



Exclusive Space Gray

Varnished metal

Metallo verniciato



Nero



Champagne

Glass and mirror

Vetro e specchio



Vetro fumé



Vetro Stopsol bronzo



Specchio bianco



Specchio grigio



Specchio bronzo



Specchio Acidato Bronzo



Specchio Acidato Grigio

INDEX

Marble Marmo

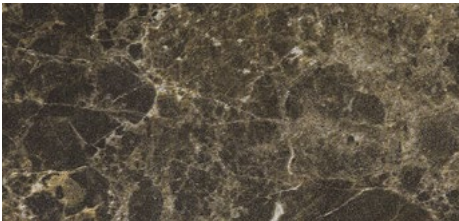


Calacatta

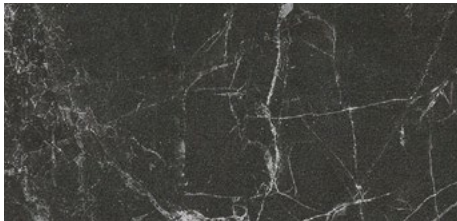


Nero Marquina

Laminam



Emperador Extra



Nero Greco



Statuarietto

Alveo fabric
12 colours



111



902



430



603



901



802



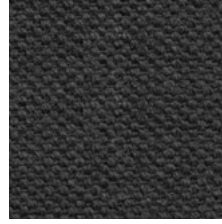
705



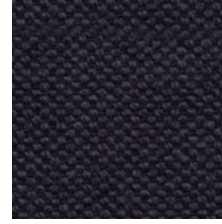
130



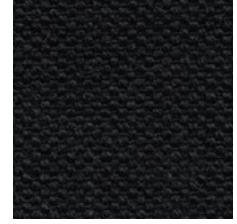
600



602



632



200



Composition 100% recycled cotton

Abrasion app. 25.000 Martindale

Care     

Biacco fabric

6 colours



53



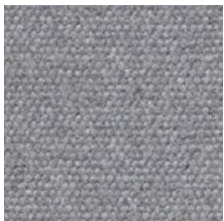
14



06



13



11



15



Composition 75% recycled CO, 25% PL

Abrasion app. 40.000 Martindale

Care

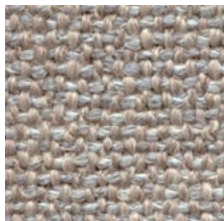


Borgo fabric

9 colours



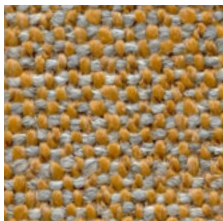
15



17



37



92



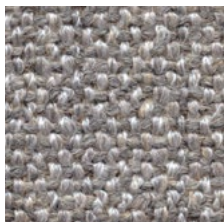
98



93



25



76



137

Composition PC 51% , LI 11%, PL 11%, VI 11%, CO 16%

Abrasion app. 25.000 Martindale

Care 

Canvas 2 (Kvadrat) fabric

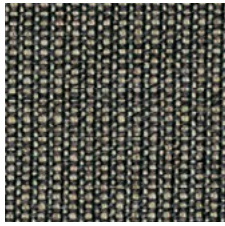
45 colours



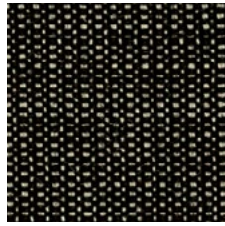
114



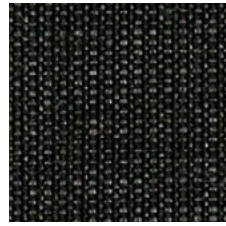
124



134



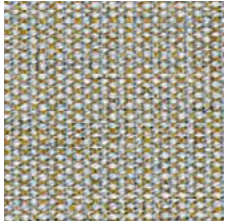
154



174



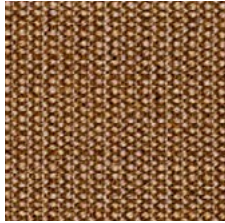
216



224



244



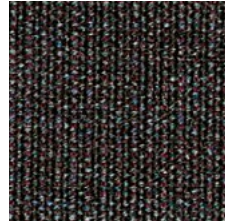
254



264



356



364



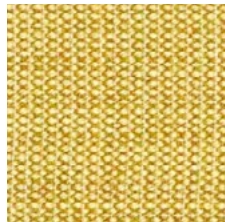
374



414



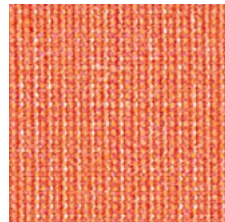
424



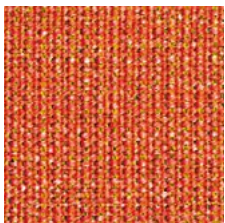
446



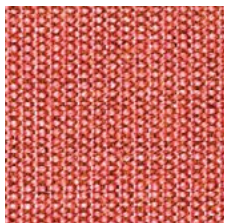
454



546



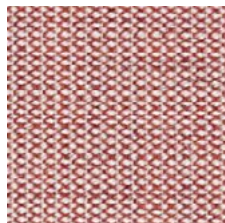
556



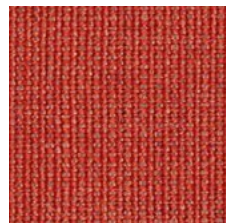
566



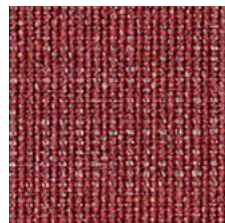
576



614



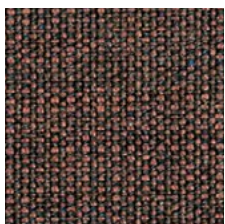
644



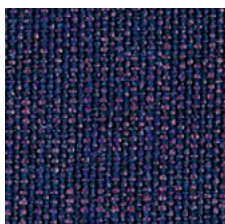
654



666



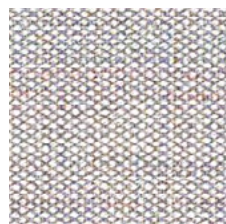
674



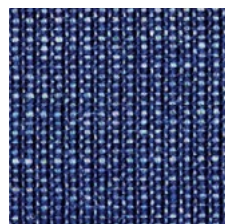
684



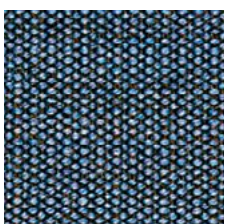
694



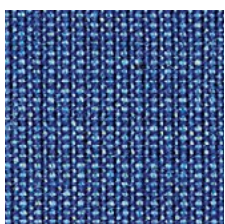
716



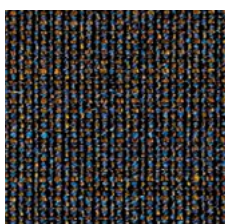
726



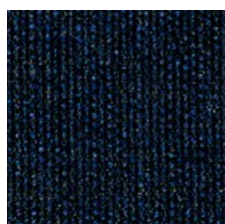
734



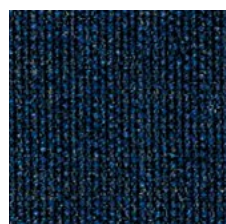
746



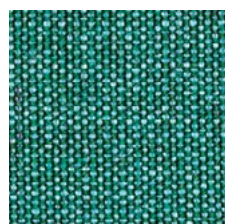
764



786

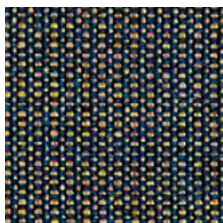


794

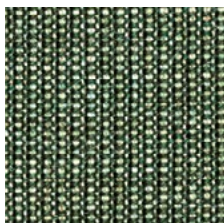


836

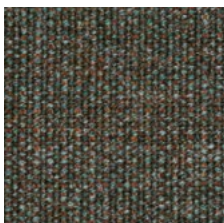
INDEX



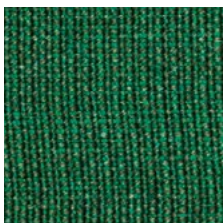
854



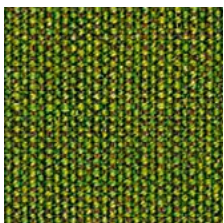
926



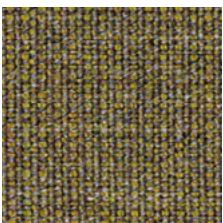
936



946



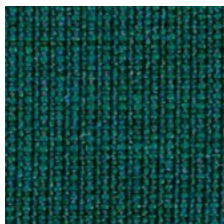
954



964



974



984



996

Design Giulio Ridolfo

Composition 90% new wool, worsted, 10% nylon

Abrasion app. 100.000 Martindale

Care 

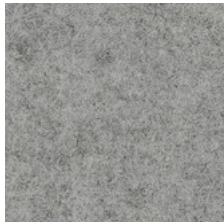
kvadrat

Divina Melange 3 (Kvadrat) fabric

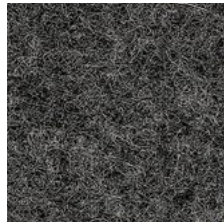
38 colours



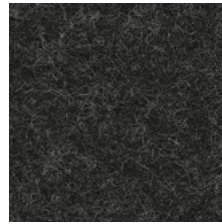
120



147



170



180



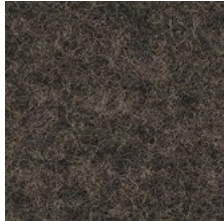
227



237



260



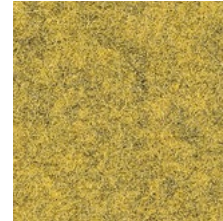
277



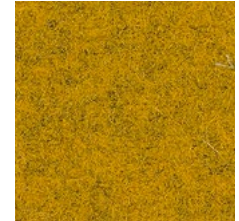
280



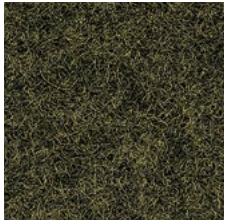
367



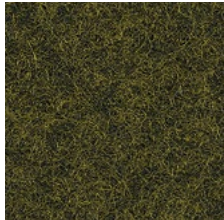
427



457



467



471



517



527



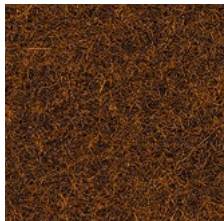
547



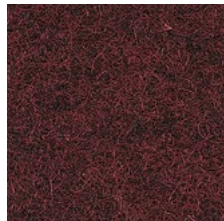
557



567



571



581



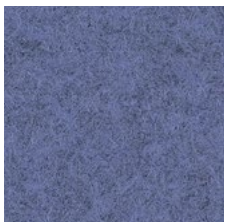
597



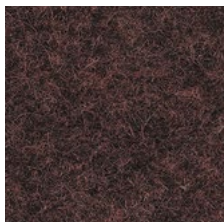
617



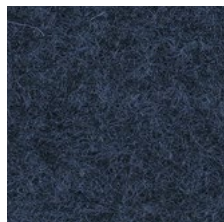
620



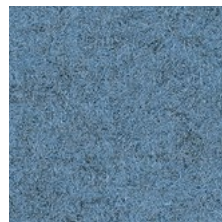
647



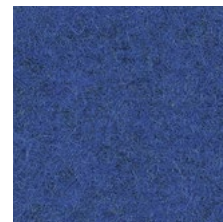
677



687



731



747



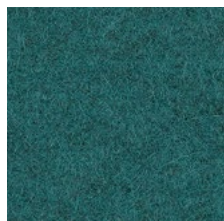
757



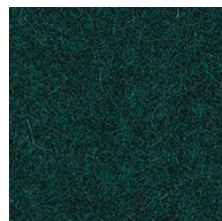
777



787



821



871



917

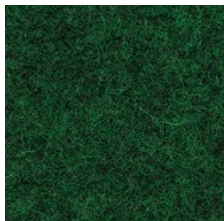


937

INDEX



967



977

Design Finn Sködt

Composition 100% new wool

Abrasion app. 45.000 Martindale

Care 

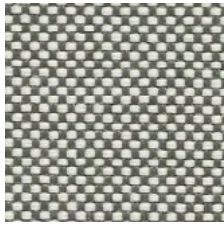
kvadrat

Field 2 (Kvadrat) fabric

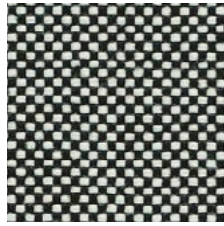
30 colours



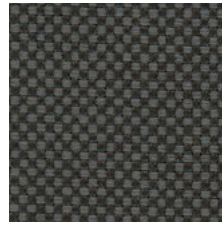
123



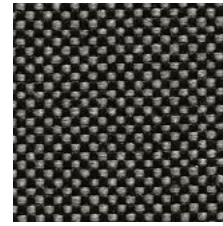
132



142



173



182



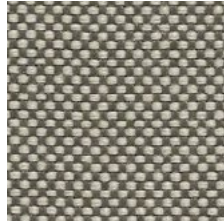
192



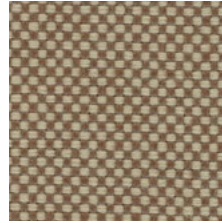
222



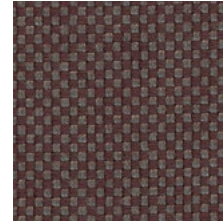
233



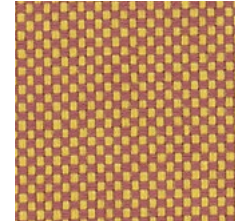
242



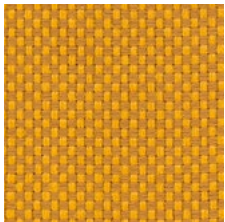
343



373



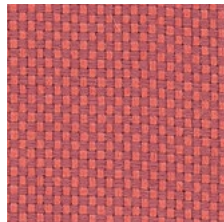
443



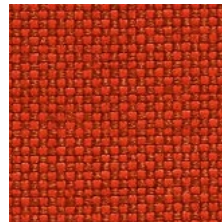
463



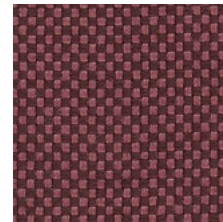
623



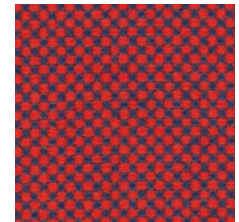
643



662



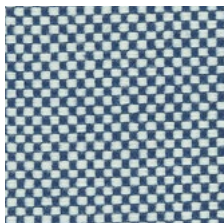
663



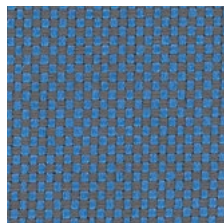
673



693



723



733



763



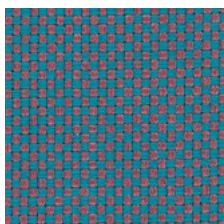
773



782



793



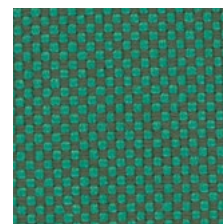
843



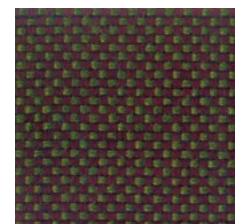
933



943



963








983

Design Alfredo Häberli

Composition 100% Trevira CS

Abrasion app. 100.000 Martindale

Care     

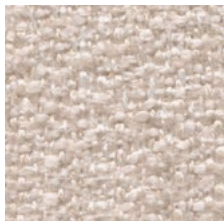
kvadrat

Greto fabric

5 colours



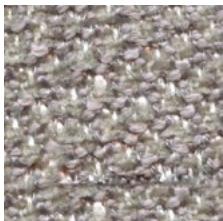
05



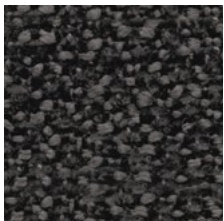
06



11



16



21

Composition PL 33% , PC 25%, VI 23%, CO 10%, LI 9%

Abrasion app. 50.000 Martindale

Care 

Hallingdal 65 (Kvadrat) fabric
58 colours



100



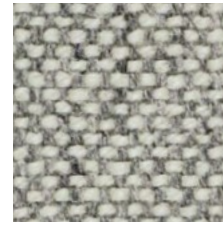
103



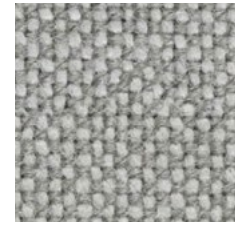
110



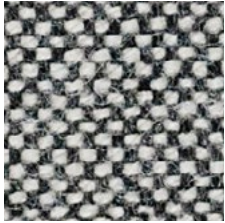
113



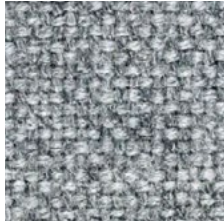
116



123



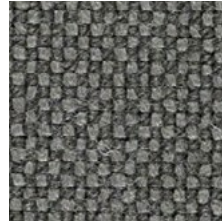
126



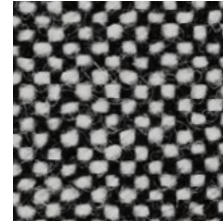
130



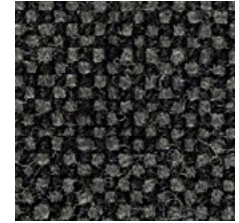
143



153



166



173



180



190



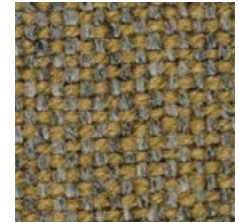
200



220



224



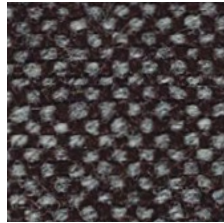
227



270



350



368



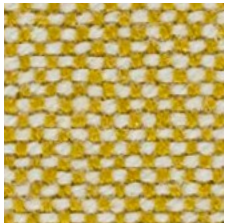
370



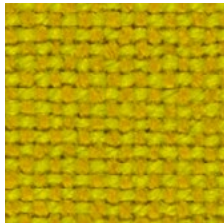
376



390



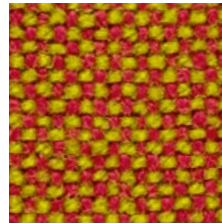
407



420



457



526



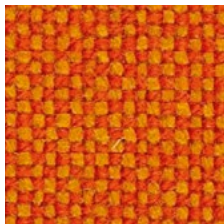
547



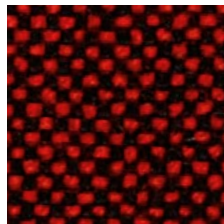
563



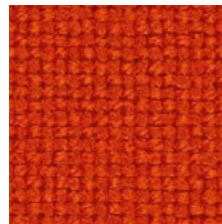
573



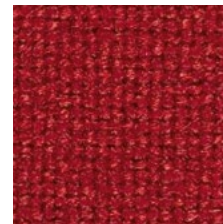
590



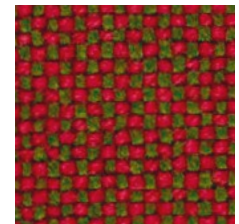
596



600

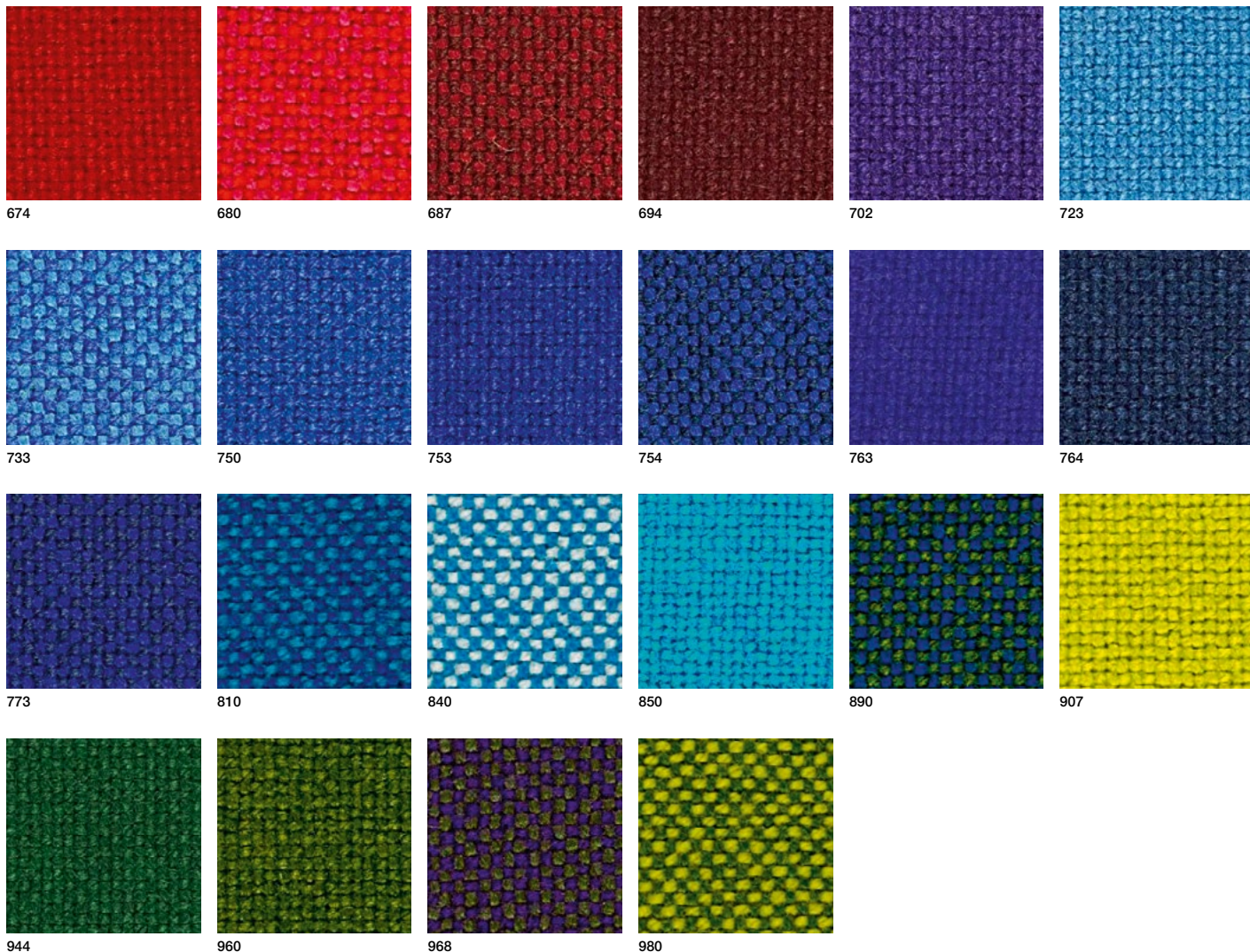


657



660


INDEX



Design Nanna Ditzel

Composition 70% new wool, 30% viscose

Abrasion app. 100.000 Martindale

Care 

kvadrat

Hero 2 (Kvadrat) fabric

33 colours



102 152 162 182 192 202



212 242 312 352 372 392



422 432 512 542 552 582



622 652 662 672 732 742




752 772 782 862 882 912



932 942 962

Composition 96% new wool, 4% nylon

Abrasion app. 45.000 Martindale

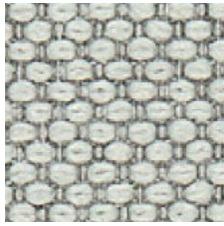
Care 

Merit (Maharam) fabric

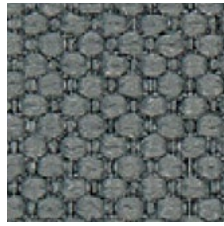
43 colours



001



002



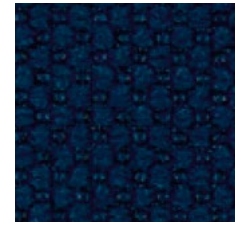
003



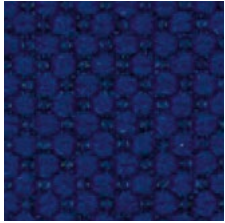
004



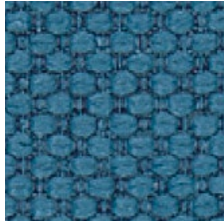
005



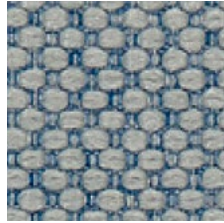
006



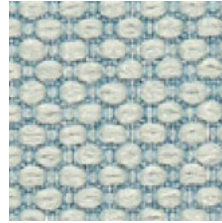
007



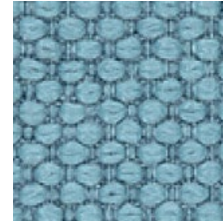
008



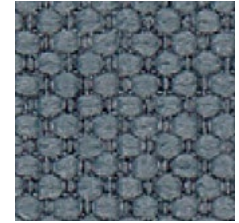
009



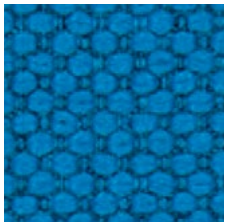
010



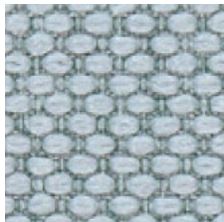
011



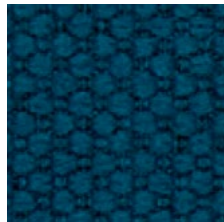
012



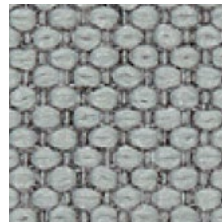
013



014



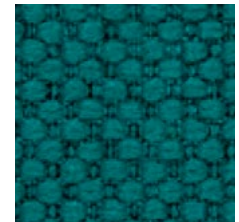
015



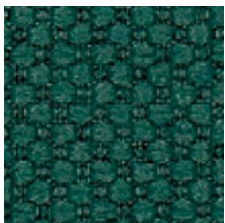
016



017



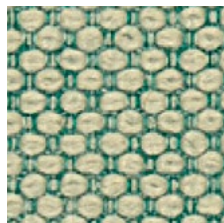
018



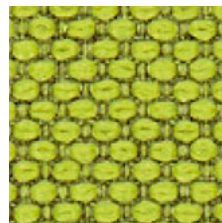
019



020



021



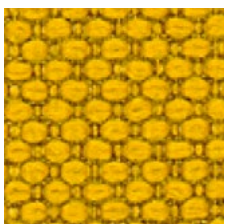
022



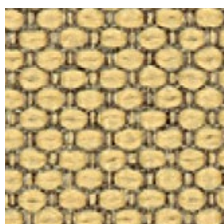
023



024



025



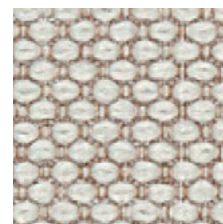
026



027



028



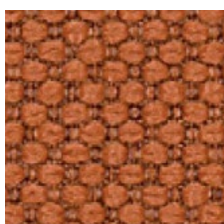
029



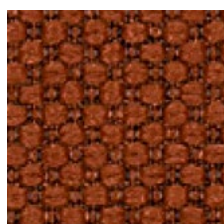
030



031



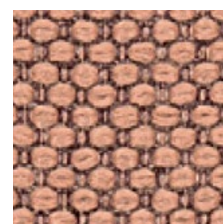
032



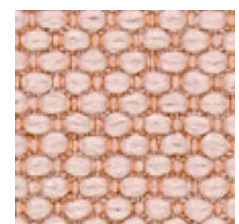
033



034



035

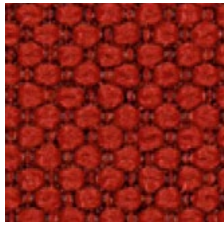


036

INDEX



037



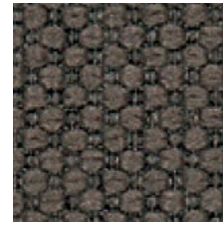
038



039



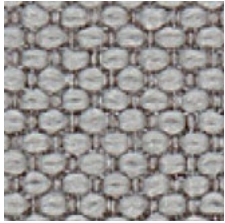
040



041



042








043



Composition 76% post-consumer recycled polyester, 24% polyester

Abrasion app. 85.000 Martindale

Care     

maharam

Moss (Sahco) fabric

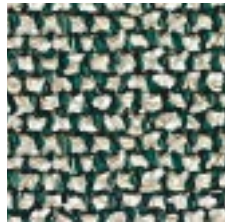
22 colours



0001



0002



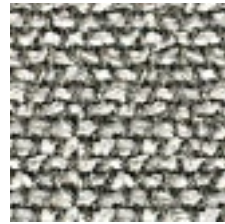
0003



0004



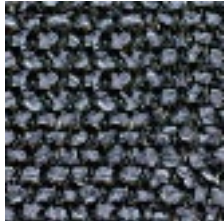
0005



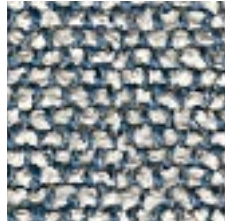
0006



0007



0009



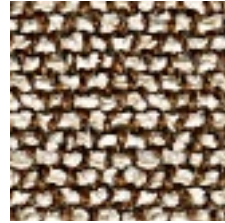
0010



0011



0012



0013



0014



0015



0016



0017



0018



0019



0020



0021



0022

Design Vincent Van Duysen

Composition 52% cotton, 22% viscose, 14% Acrylic, 6% linen, 3% polyamide, 3% polyester

Abrasion app. 50.000 Martindale

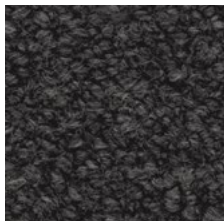
Care 

Orsetto (ONE Mario Sirtori) fabric

6 colours



01/2



98/21



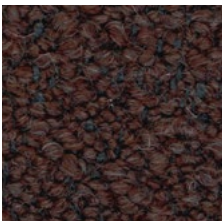
02/26



98/18



98/20



98/16

Composition 34% Viscose, 33% Acrylic, 17% Wool, 8% Polyester, 4% Flax, 4% Cotton

Abrasion app. 80.000 Martindale

Care 

Parigi fabric
18 colours



50



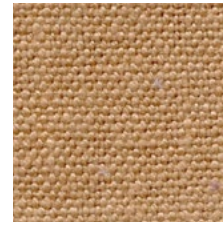
39



41



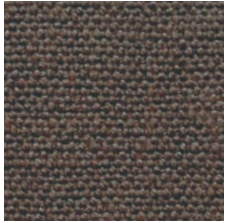
37



07



06



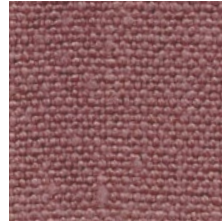
13



09



10



12



34



33



30



32



26



36



27



28

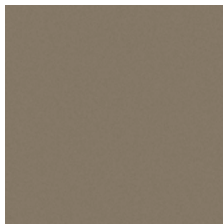
Composition 100% linen

Abrasion app. 30.000 Martindale

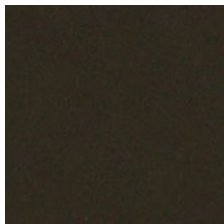
Care      

Scuba (Maharam) fabric

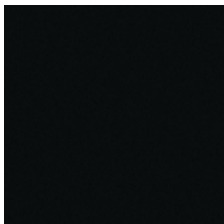
13 colours



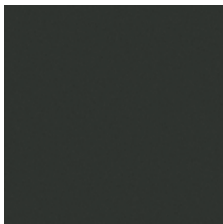
005



006



007



008



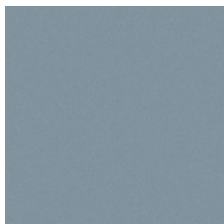
009



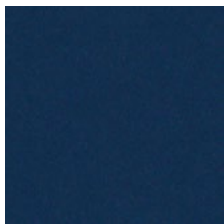
010



012



015



016



017



020




021



023

Composition 100% polyurethane (surface), 100% polyester (backing)

Abrasion app. 100.000 Martindale

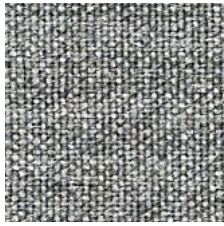
Care 

Remix 3 (Kvadrat) fabric

72 colours



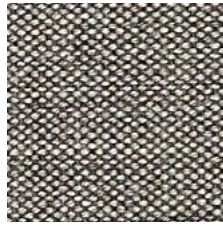
113



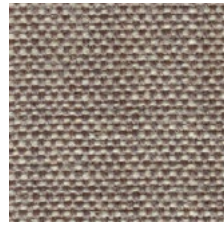
123



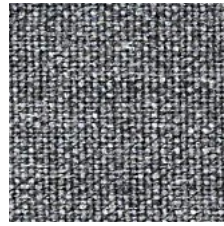
126



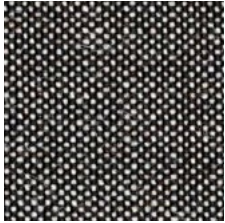
133



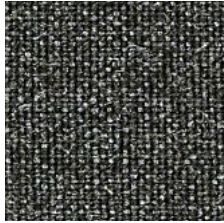
136



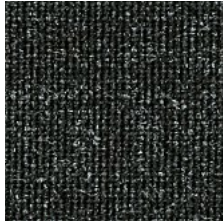
143



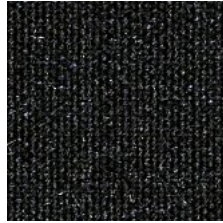
152



163



173



183



196



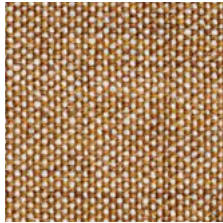
223



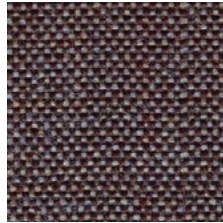
233



242



252



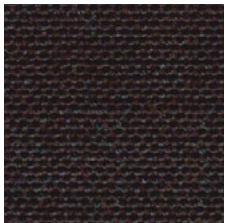
266



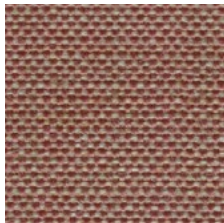
276



286



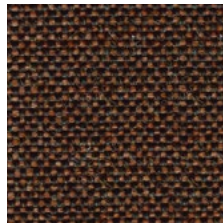
296



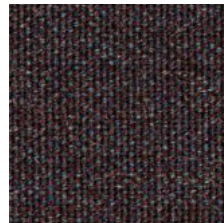
326



346



356



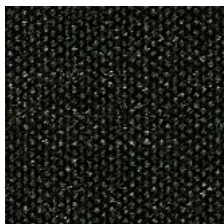
362



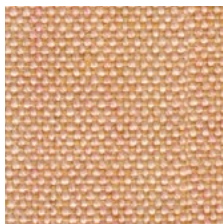
373



383



393



406



412



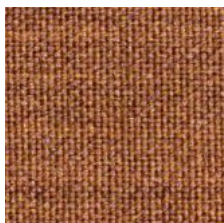
422



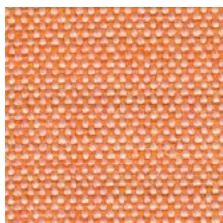
433



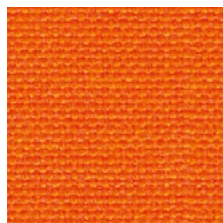
443



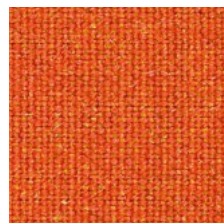
452



516



536

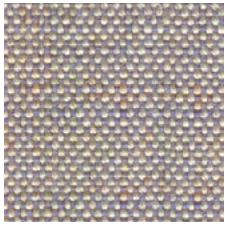


543

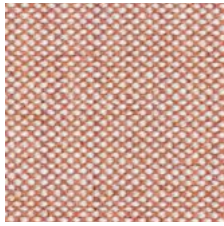


566

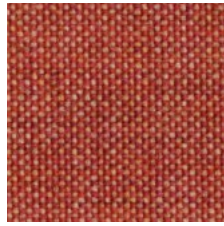
INDEX



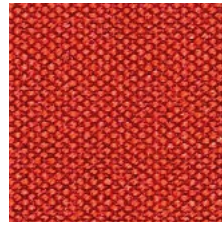
606



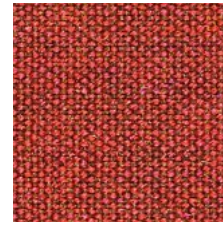
612



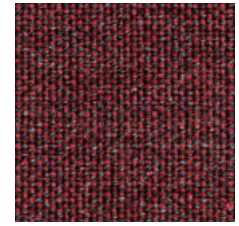
632



643



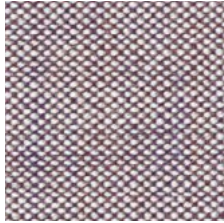
653



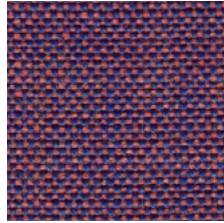
662



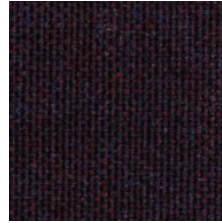
672



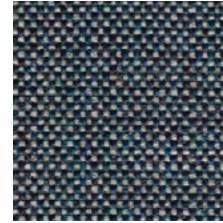
682



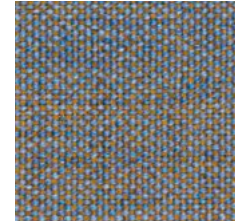
686



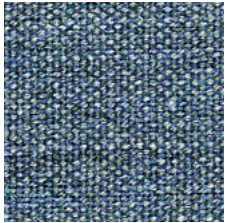
692



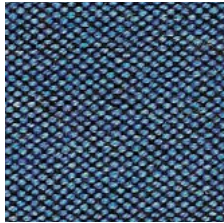
716



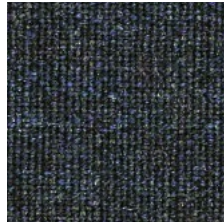
722



733



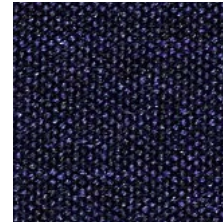
743



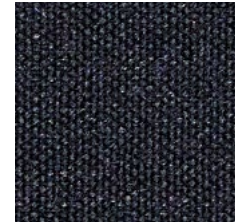
753



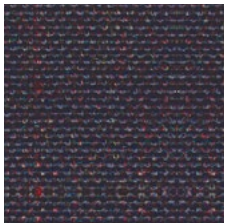
762



773



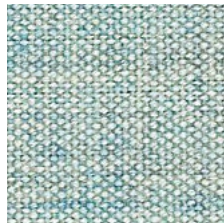
783



796



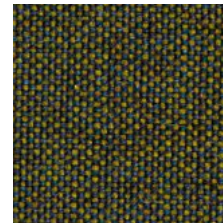
816



823



836



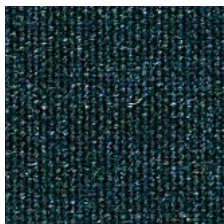
842



852



866



873



906



912



923



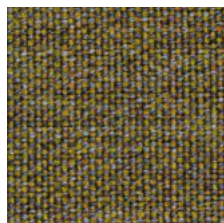
933



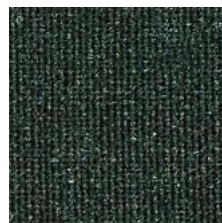
942



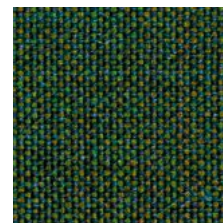
954



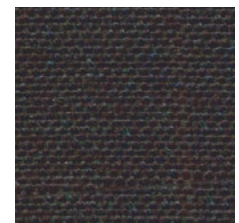
962



973



982



996

Composition 90% new wool, worsted, 10% nylon

Abrasion app. 100.000 Martindale

Care 

kvadrat

Steelcut Trio 3 (Kvadrat) fabric

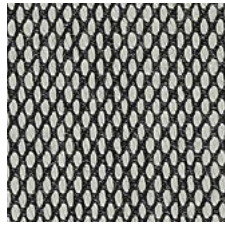
54 colours



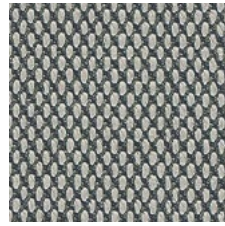
105



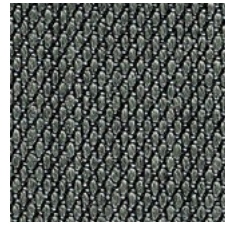
113



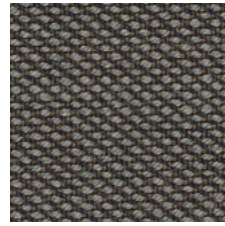
124



133



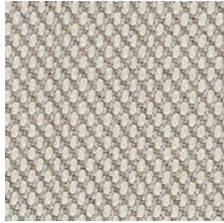
153



176



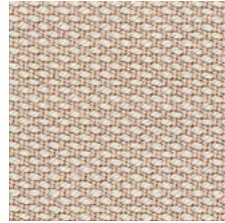
195



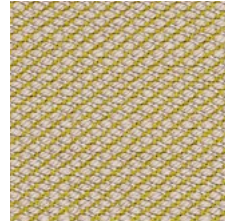
205



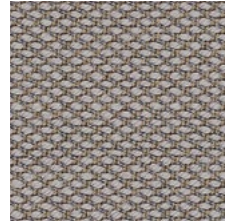
213



226



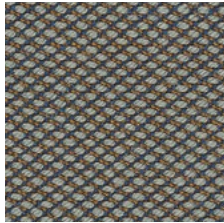
236



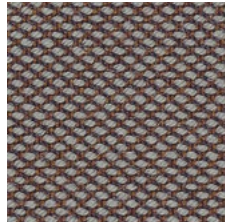
246



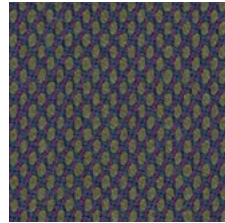
253



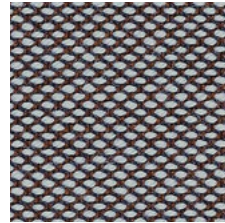
266



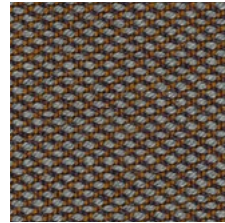
276



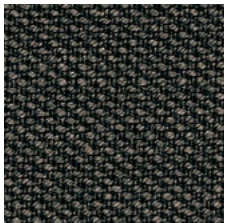
283



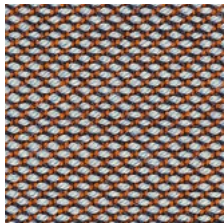
336



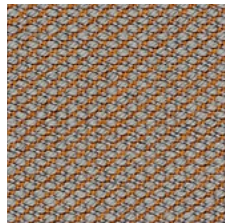
376



383



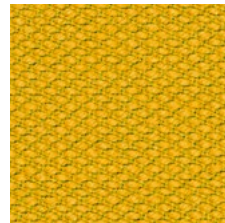
416



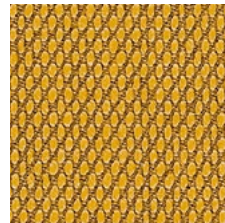
426



436



446



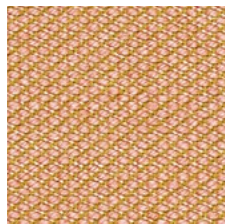
453



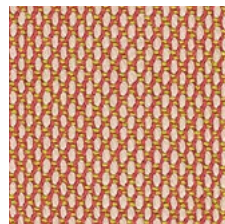
466



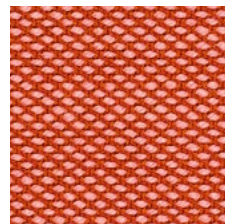
476



506



515



526



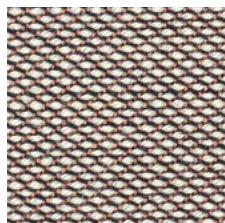
533



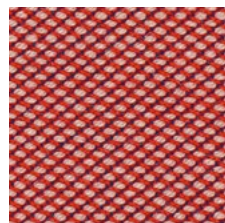
553



576



616



636

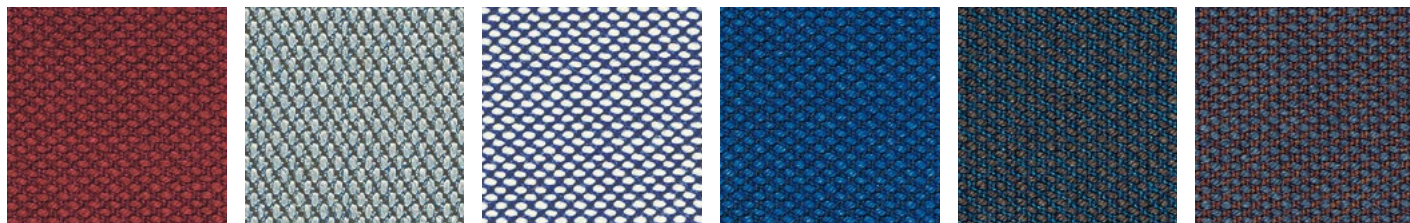


645



666

INDEX



686

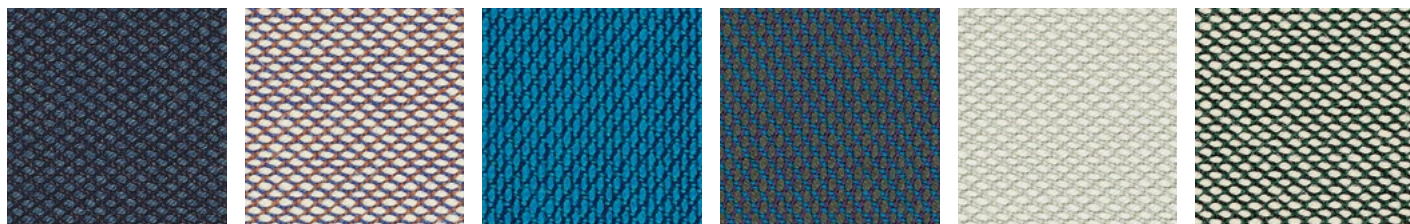
713

716

746

756

776



796

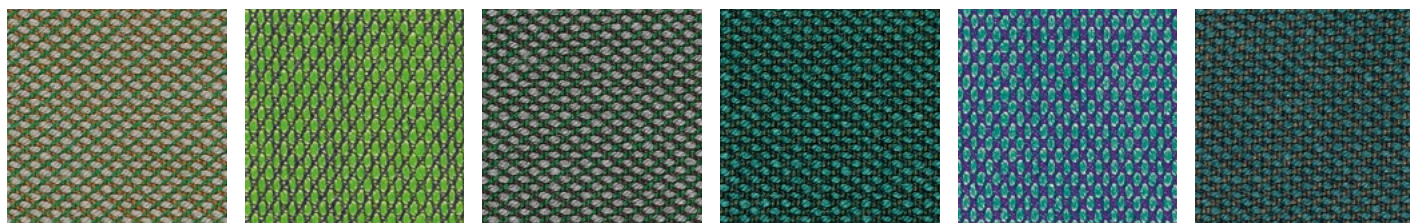
806

865

883

906

916



946

953

966

976

983

996

Design Frans Dijkmeijer and Giulio Ridolfo

Composition 90% new wool, worsted, 10% nylon

Abrasion app. 100.000 Martindale

Care

kvadrat

Stipa fabric

10 colours



03



05



02



04



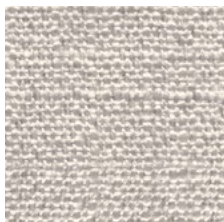
31



46



150



16



06



07

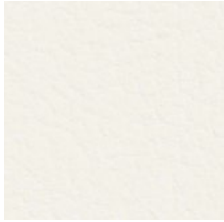
Composition VI 34% , CO 31%, LI 15%, PC 13%, PL 7%

Abrasion app. 25.000 Martindale

Care 

Valencia (Spradling) synthetic leather

66 colours



107-9607 Pure White



107-8020 Pearlescence



107-8032 Weiss



107-1048 Sisal



107-1020 Ivory



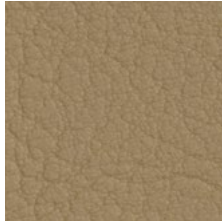
107-4044 Warm Grey



107-1049 Leinen



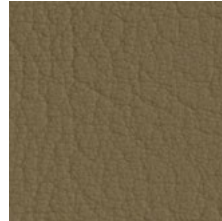
107-1001 Champagne



107-1050 Beige



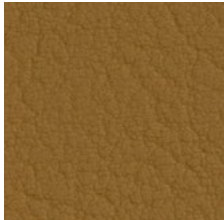
107-0034 Taupe



107-4001 Mushroom



107-9001 Sumatra



107-0002 Cognac



107-0035 Terracotta



107-2115 Chestnut



107-0033 Buche



107-4041 Meteor



107-5002 Moss



107-2116 Camel



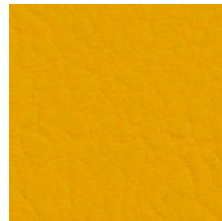
107-2117 Cashmere



107-6013 Melone



107-6012 Safran



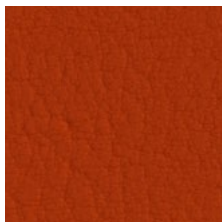
107-2111 Squash



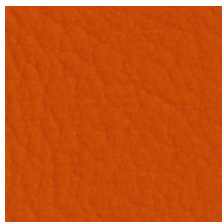
107-2020 Sonne



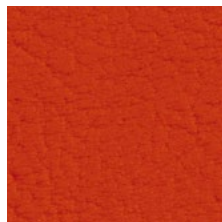
107-9245 Peach



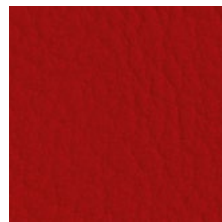
107-6003 Nectarine



107-6019 Orange



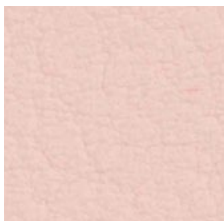
107-2112 Tomato



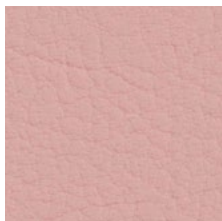
107-2075 Rot



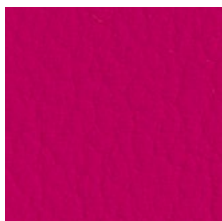
107-2074 Kirsche



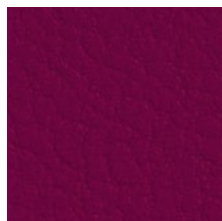
107-2113 Lotus



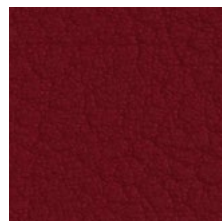
107-2114 Rosé



107-2021 Pink



107-2002 Berry



107-2062 Port



107-2001 Merlot

INDEX



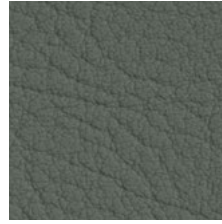
107-7001 Amethyst



107-0020 Mocca



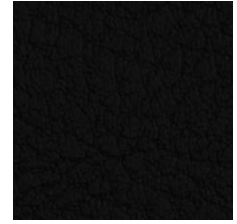
107-0001 Praliné



107-4052 Lichtgrau



107-4003 Graphite



107-9035 Schwarz



107-5451 Pine



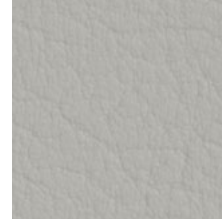
107-8483 Cactus



107-4002 Laurel



107-2522 Fungi



107-4040 Auster



107-2008 Everest



107-6438 Eucalyptus



107-8415 Misty



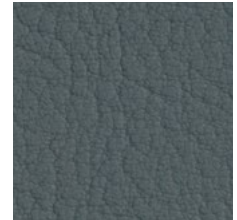
107-5032 Cloud



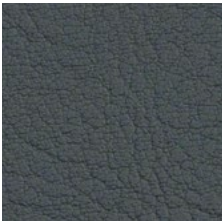
107-4045 Perle



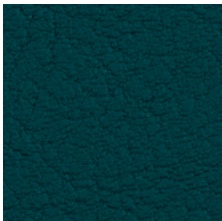
107-4020 Silver



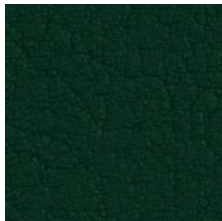
107-4043 Platin



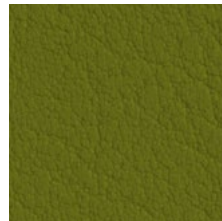
107-5065 Petrol



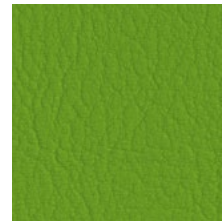
107-2119 Teal



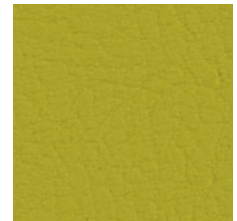
107-5069 Grün



107-5001 Olive



107-5041 Apfel



107-2110 Avocado



107-0370 Azure



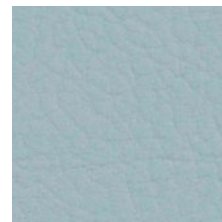
107-5057 Türkis



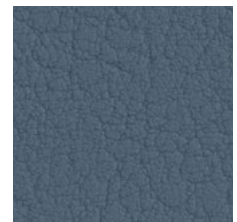
107-5056 Jade



107-2106 Coral



107-2107 Skylight



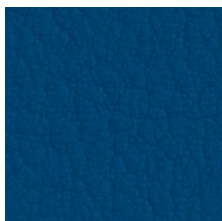
107-4042 Titan



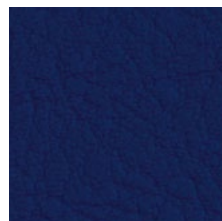
107-0337 Scuba



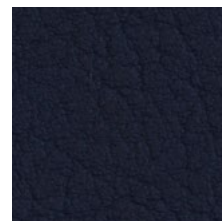
107-3001 Lavendel



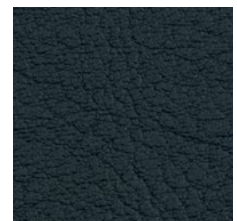
107-3069 Baltic



107-3067 Delft



107-3068 Marine



107-2108 Night

Composition Topcoat 100% vinyl, backing 100% polyester Hi-Loft

Abrasion app. 300.000 Martindale

Care



SPRADLING®

Vello fabric

13 colours



01



03



05



07



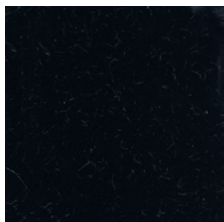
29



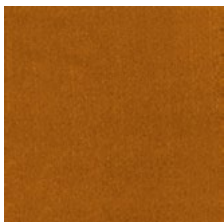
28



2002



26



14



70



2007



58



1041

Composition 100% Cotton

Abrasion app. 70.000 Martindale

Care 

Elmosoft X (Elmo) semi-aniline leather

70 colours



INDEX



35126



43054



44012



44023



45035



45043



45065



54021



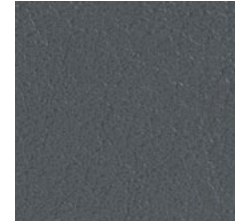
54033



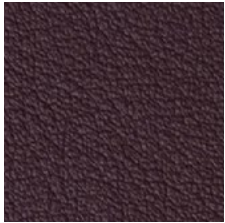
54035



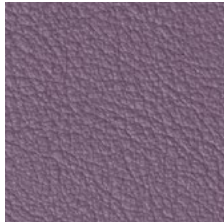
55002



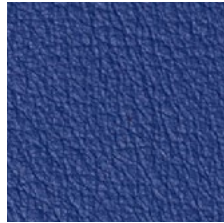
71017



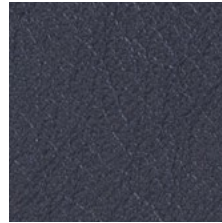
75013



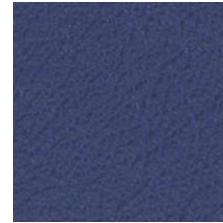
76003



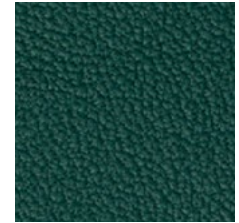
77078



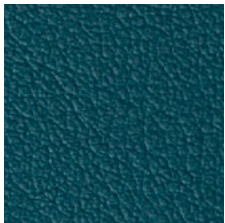
77127



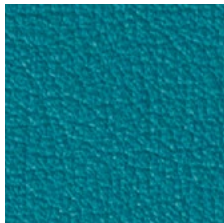
77158



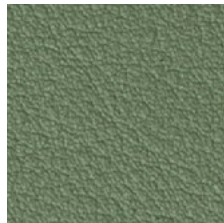
78038



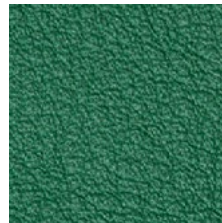
87025



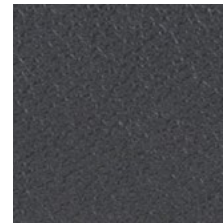
87033



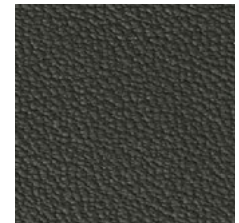
88058



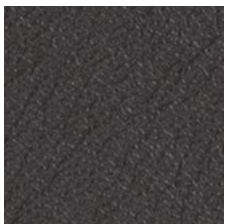
88059



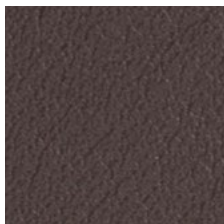
91102



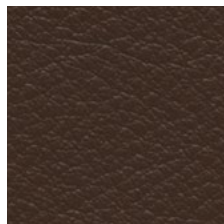
91118



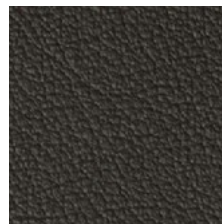
93068



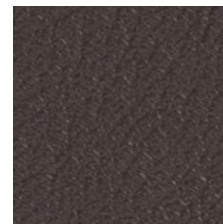
93099



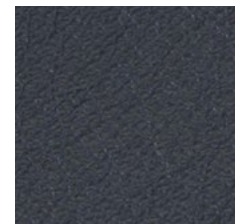
93109



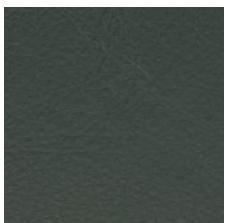
93121



93129



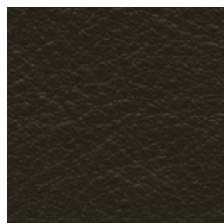
97038



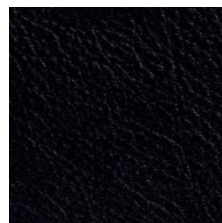
98015



98047



98087



99999

Elmocoast / Neocoast (Elmo) pigmented & printed leather

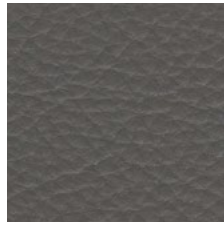
20 colours



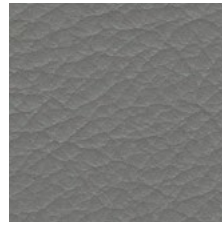
99076



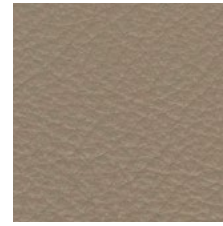
91097



91100



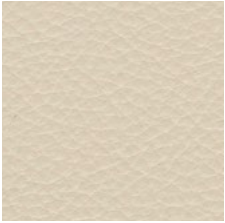
71010



18008



12097



02061



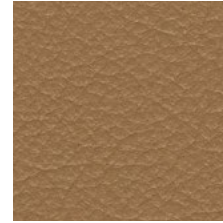
00114



93090



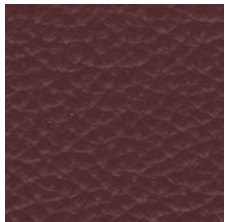
98016



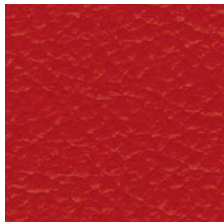
43041



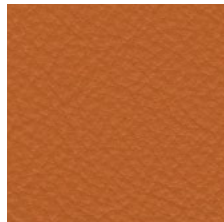
43084



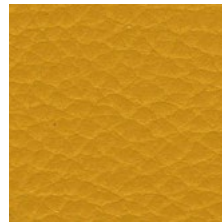
95042



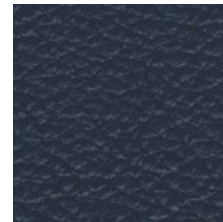
55058



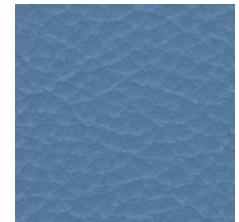
45024



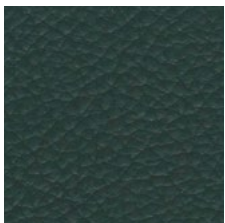
44015



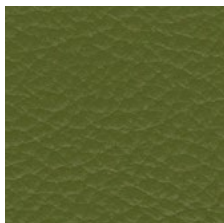
77022



77035



98043



88017

Lino Lino (Kvadrat) fabric for Telon curtain system

7 colours



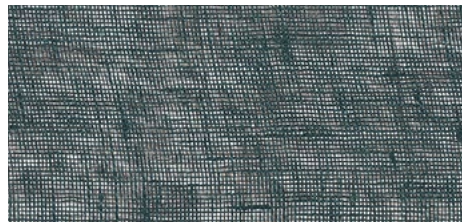
0001



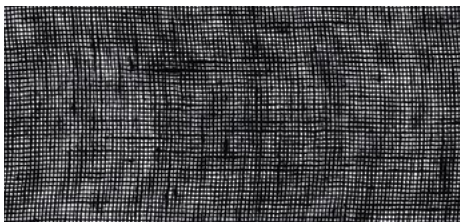
0012



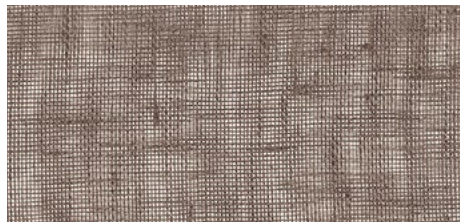
0013



0014



0023



0026



0030

Design Kinnasand

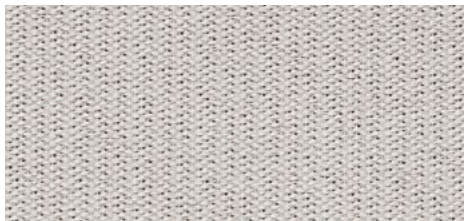
Composition 100% Linen

Width app. 290 cm

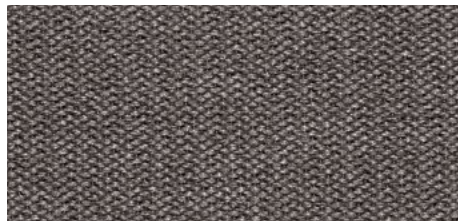
Care     

Twilight (Kvadrat) fabric for Telon curtain system

10 colours



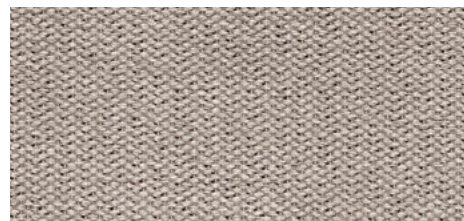
112



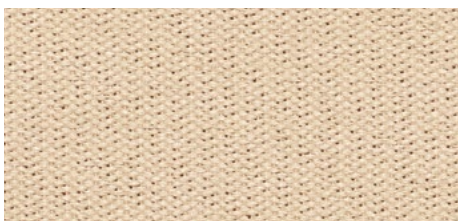
152



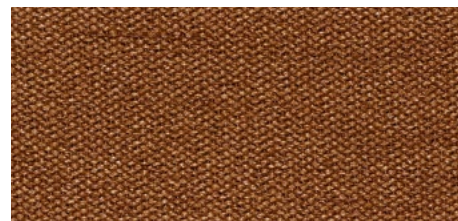
192



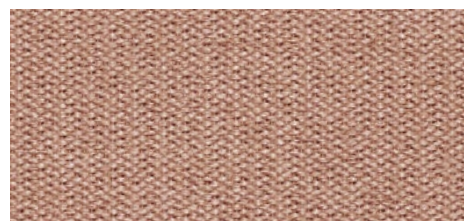
212



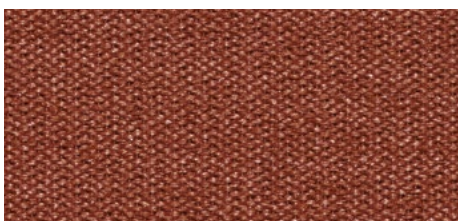
252



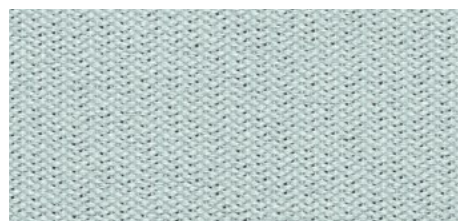
352



512



552



912






992

Design Patricia Urquiola

Composition 59% polyester FR, 41% polyester

Width app. 300 cm

Care     

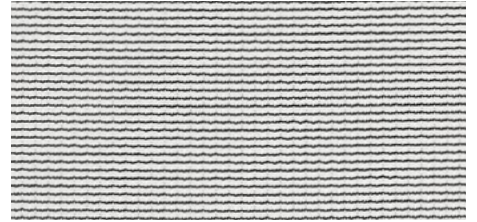
Zulu 2 (Kvadrat) fabric for Telon curtain system 18 colours



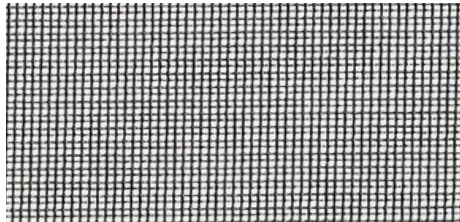
0104



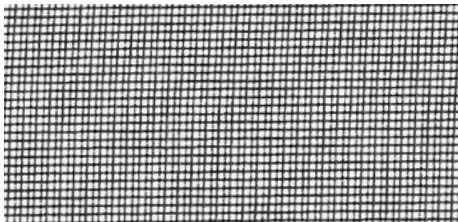
0134



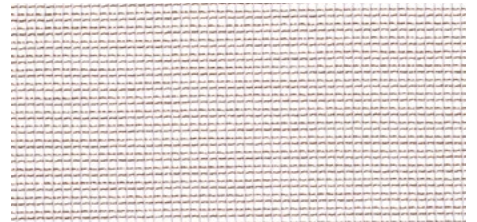
0154



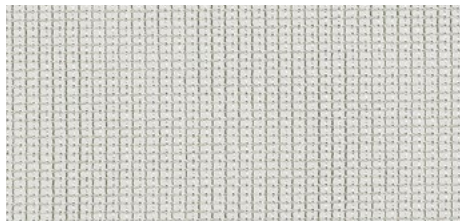
0174



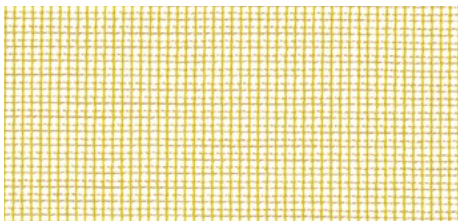
0194



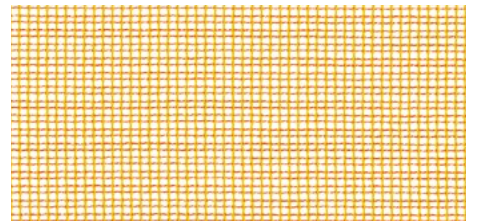
0202



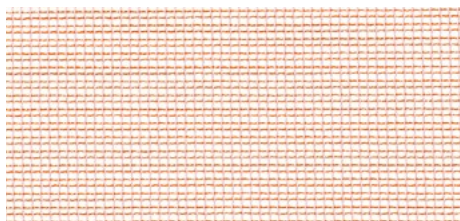
0234



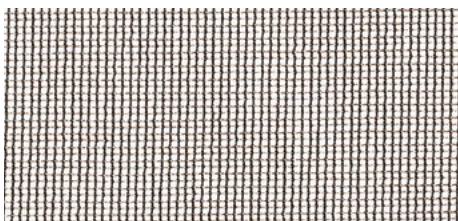
0452



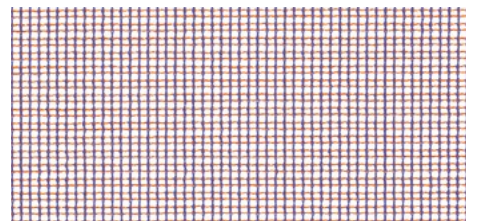
0472



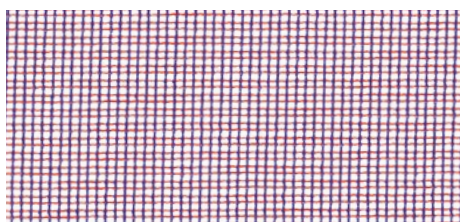
0602



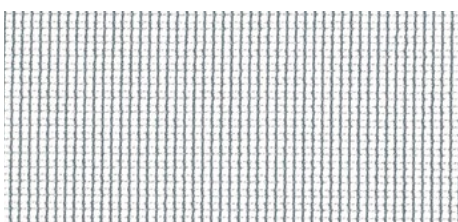
0654



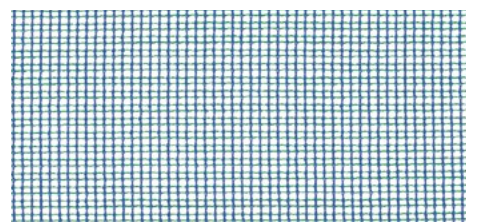
0662



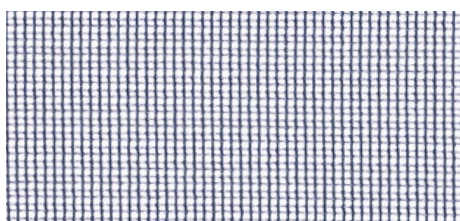
0672



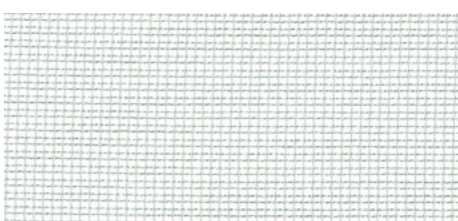
0732



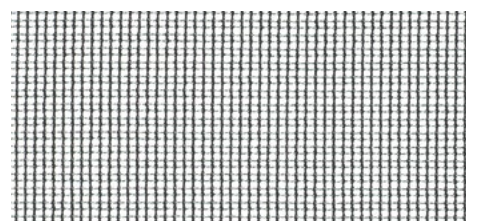
0772



1792



0902



0992

Composition 100% Trevira CS

Width app. 300 cm

Care     

Shades of colour cannot be reproduced exactly on printed paper. MD House is entitled to make modifications at any time and without prior notice. | Nella stampa su carta la tonalità dei colori non può essere riprodotta fedelmente. MD House si riserva la facoltà di apportare modifiche in qualsiasi momento e senza preavviso. | Aus drucktechnischen Gründen können die Farben am Papier nicht naturgetreu wiedergegeben werden. MD House behält sich das Recht vor, jederzeit und ohne Vorankündigung Änderungen am Produkt vornehmen zu können. | En la impresión realizada en papel no puede reproducirse fielmente la tonalidad de los colores. MD House se reserva la facultad de aportar modificaciones en cualquier momento y sin preaviso. | Les coloris imprimés peuvent être différents de la réalité. MD House se réserve le droit d'apporter toute modification à tout moment et sans préavis.

md h