



Novel

Novel is a metal frame that can be complemented with shelves, closet poles, lighting and accessories, whereas Telon is a curtain that hides it from view and reveals, in certain cases, a cupboard, a work area or multimedia space, or even all these things together. The Novel walk-in wardrobe is complemented with a range of accessories designed to meet all needs. They include a set of modular and combinable trays designed to hold jewellery, watches and small accessories, aluminium trouser-racks and laundry bins, fixed or pull-out shoe racks, mats for placing on top of drawer units, dimmable lighting with remote control, as well as mirrors.

DESIGN Lievore + Altherr Désile Park & ruga.perissinotto

Novel è una struttura metallica da completare con ripiani, pali appendiabiti, illuminazione e accessori, mentre Telon è la tenda che la nasconde alla vista, rivelando all'occorrenza un armadio, uno spazio di lavoro o multimediale, ma anche tutte queste cose assieme. La cabina armadio Novel si completa con una serie di accessori progettati per soddisfare ogni tipo di necessità. Dal set di vassoi componibili e combinabili pensati per contenere gioielli, orologi e piccoli accessori ai porta pantaloni e porta biancheria in alluminio; dai porta scarpe fissi o estraibili ai tappetini da applicare al top delle cassettiere; dall'illuminazione dimmerabile da controllare con telecomando agli specchi.

Lievore + Altherr Désile Park & ruga.perissinotto



An offshoot of the long-standing Lievore Altherr studio in Barcelona, Lievore + Altherr Désile Park is the result of the merger of two studios specialised in product design and development, strategic consulting, creative direction, art direction and ephemeral architecture for leading international design companies.

The ruga.perissinotto studio was established after a meeting between Alessandro Ruga and Carlotta Perissinotto in London in 2010. Inspired by a versatile approach to design issues, they collaborate with various companies in the furniture district.

Evoluzione dello storico studio Lievore Altherr di Barcellona, Lievore + Altherr Désile Park nasce dall'unione di due studi specializzati in design e sviluppo di prodotti, consulenza strategica, direzione creativa, direzione artistica e architettura effimera per le maggiori aziende di design a livello internazionale.

Lo studio ruga.perissinotto nasce dall'incontro tra Alessandro Ruga e Carlotta Perissinotto, avvenuto a Londra nel 2010. Animato da un approccio trasversale alle tematiche progettuali, collabora con diverse aziende del distretto del mobile.

Elements and modularity

Ceiling supportW

Max H 350 cm H 137⁶/₈"



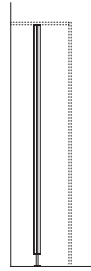
all support

H 236,8 cm H 93²/₈"
H 256 cm H 100⁶/₈"



Cielo support

H 236,8 cm H 93²/₈"
H 256 cm H 100⁶/₈"



Shelf P 54 cm D 21²/₈"

	47,5 18 ⁶ / ₈ "	77,5 30 ⁴ / ₈ "	97,5 38 ³ / ₈ "	117,5 46 ² / ₈ "
2,5 1"	[Diagram showing shelf depth and spacing]			

Shelf P 40 cm D 15⁵/₈"

	47,5 18 ⁶ / ₈ "	77,5 30 ⁴ / ₈ "	97,5 38 ³ / ₈ "	117,5 46 ² / ₈ "
2,5 1"	[Diagram showing shelf depth and spacing]			

Shoe-rack P 54 cm D 21²/₈"

	47,5 18 ⁶ / ₈ "	77,5 30 ⁴ / ₈ "	97,5 38 ³ / ₈ "	117,5 46 ² / ₈ "
2,5 1"	[Diagram showing shoe-rack depth and spacing]			

Drawer unit w/ 2 drawers P 53 cm D 20⁷/₈"

	77,5 30 ⁴ / ₈ "	97,5 38 ³ / ₈ "
38,4 15 ¹ / ₈ "	[Diagram showing drawer unit depth and spacing]	

Drawer unit w/ 3 drawers P 53 cm D 20⁷/₈"

	77,5 30 ⁴ / ₈ "	97,5 38 ³ / ₈ "
57,6 22 ⁵ / ₈ "	[Diagram showing drawer unit depth and spacing]	

Desk with drawer P 53 cm D 20⁷/₈"

	97,5 38 ³ / ₈ "	117,5 46 ² / ₈ "
11 4 ³ / ₈ "	[Diagram showing desk with drawer depth and spacing]	

Cielo P 63 cm D 24⁶/₈"

	mtl
2,5 1"	[Diagram showing Cielo panel depth]

Hanging rod Ø 3,5 cm Ø 1³/₈"

	47,5 18 ⁶ / ₈ "	77,5 30 ⁴ / ₈ "	97,5 38 ³ / ₈ "	117,5 46 ² / ₈ "
7 2 ⁶ / ₈ "	[Diagram showing hanging rod depth and spacing]			

Pull-out accessories

1 shelf
L 97,5 P 53 H 12 cm
W 38³/₈" D 20⁷/₈" H 4⁶/₈"

3 shelves
L 97,5 P 53 H 32 cm
W 38³/₈" D 20⁷/₈" H 12⁵/₈"

1 trouser-rack
L 97,5 P 53 H 12 cm
W 38³/₈" D 20⁷/₈" H 4⁶/₈"

1 shelf + 1 shoe-rack
L 97,5 P 53 H 32 cm
W 38³/₈" D 20⁷/₈" H 12⁵/₈"

2 shelves
L 97,5 P 53 H 22 cm
W 38³/₈" D 20⁷/₈" H 8⁵/₈"

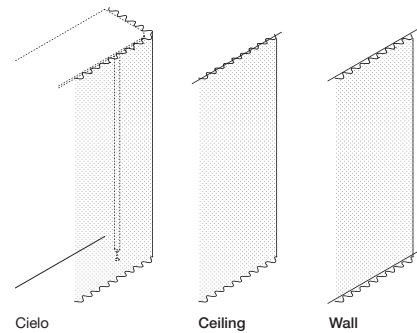
1 shelf + 1 trouser-rack
L 97,5 P 53 H 22 cm
W 38³/₈" D 20⁷/₈" H 8⁵/₈"

1 shoe-rack
L 97,5 P 53 H 22 cm
W 38³/₈" D 20⁷/₈" H 8⁵/₈"

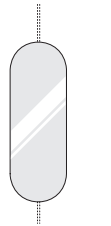
TV panels

	77,5 30 ⁴ / ₈ "	97,5 38 ³ / ₈ "	117,5 46 ² / ₈ "
98 38 ⁵ / ₈ "	[Diagram showing TV panel width and height]	[Diagram showing TV panel width and height]	[Diagram showing TV panel width and height]
131,5 51 ⁶ / ₈ "	[Diagram showing TV panel width and height]	[Diagram showing TV panel width and height]	[Diagram showing TV panel width and height]

Telon types

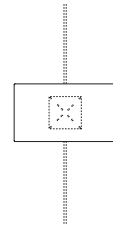


Swivel mirror



L 60 H 160 cm
W 23³/₈" H 63"

TV swivel mechanism

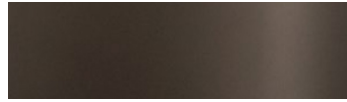


FINISHES

Anodized metal



Nero



Bronzo

Melamine-faced



Materico Eucalipto



Materico Noce



Materico Graywood



Lacquered Eucalipto

Matt lacquer



Neve



Pomice



Latte



Canapa



Avena



Beige



Corda



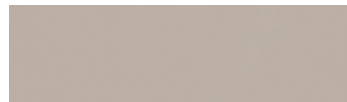
Lino



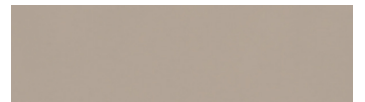
Tufo



Visone



Spago



Fango



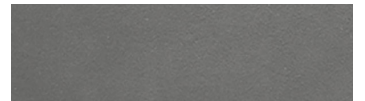
Grafite



Colombo



Basalto



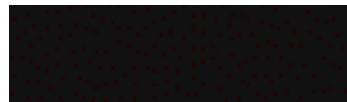
Piombo



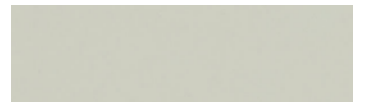
Grigio



Asfalto



Nero



Pioggia



Argilla



Ferro



Ambra



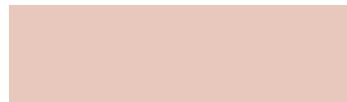
Miele



Rosso Rubino



Cameo



Conchiglia



Oliva



Alpi



Notte

Tempered glass



Fumé